



 RÉPUBLIQUE FRANÇAISE



FOUNDRY

MACHINING

SURFACE COATING

FITTING / ASSEMBLY

# THE ANSWER TO YOUR NEEDS



## ▲ PATTERNSHOP

- Wood, resin, elastomer and polystyrene.



## ▲ AUTOMATIC CORE SHOP

- 3 automatic machines.
- Capacity : 1.5 / 10 and 36 litres.
- BETASET process.



## ▲ MANUAL CORE SHOP

Self-hardening sand furan process



## ▲ AUTOMATIC FLASKLESS MOULDING LINE

- Capacity : small and medium series.
- Dimensions 500 x 530 mm to 1100 x 940 mm - Ht 2 x 300 mm.
- Maximum part weight : 200 kg liquid.
- Self-hardening sand furan process..



## ▲ HAND MOLDING

- Capacity : prototype, single part and small series.
- Maximum dimensions : 3800 x 1000 mm.
- Maximum part weight : 1 T liquid.
- Self-hardening sand furan process.



## ▲ 3D SAND PRINTING (outsourcing)

- Molds and/or cores.
- High responsiveness.
- No pattern making required (reduced cost and storage).
- Ability to produce parts with complex shapes and no draft angle.
- Compatible with all grades of cast iron.



## ▲ MELTING SHOP


- 2 MF electric induction furnaces.
- Capacity / oven : 1 metric ton.



## ▲ GRINDING SHOP

- Robotized grinding cell.
- Manual grinding.





Gray iron (EN-GJL)

Spheroidal cast iron (EN-GJS+LT)

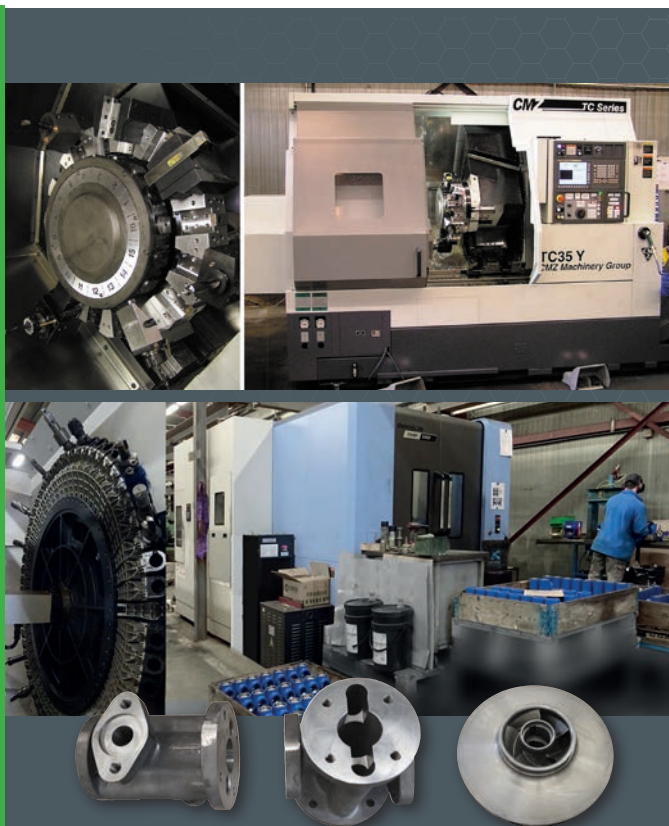
Chrome cast iron resistant to wear and oxidation

NI-HARD cast iron resistant to abrasion

SiMo cast iron resistant to high T° C

NI-RESIST cast iron resistant to corrosion

- Stabilization
- Ferritizing



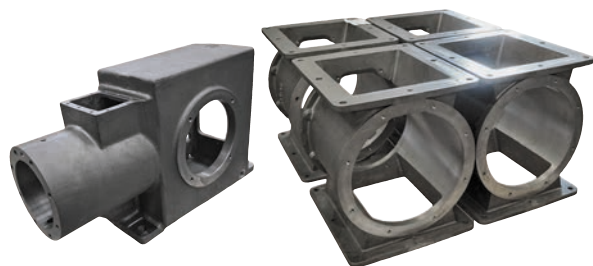
### BASE OF NUMERICALLY CONTROLLED MACHINES

- DC 4 axes turning. Max dimensions :  
Ø 550 mm, length 500 mm (beyond, please call).
- Machining centre with 4 axes. Max dimensions :  
800 mm x 800 mm x 600 mm (above, contact us).

### BASE OF CONVENTIONAL MACHINES

In addition to the numerically controlled machines, our conventional equipment is easy to implement for producing small quantities or single parts.

- Milling
- Turning
- Drilling



GJS 400-18 LT

GJL 250+Cr



Depending on your needs, we apply various protective coatings, either in-house or through qualified external subcontractors :

- Primer coating
- Dip-coated Rilsan® (ACS approval : Sanitary Conformity Certification)
- Cathaphoretic coating (outsourcing)
- Dip-coated epoxy (outsourcing)
- Liquid and powder coating (outsourcing)



Fitting of complete assemblies and subassemblies upon request.

**OUR BUSINESS SECTORS**



Naval



Mechanical constructions



Metallurgy



Defence



Agri-food



Transport



Pumps & fittings



Electric motors



Rail



Farming



Nuclear  
Renewable energies



Sanitation / road system



Urban furniture / lighting



Guide-30 kg  
GJS 500-7



Bearing cap-100 kg  
GJS 350-22 LT



Die-300 kg  
GJL 300



Rack-20 kg  
GJL 200+Cr



Cradle-50 kg  
GJS 400-15



Tray-10 kg  
GJS 450-10



Pump housing-700 kg  
NI-RESIST



Suspension arm-30 kg  
GJS 600-3



Irrigation housing-70 kg  
GJS 400-15

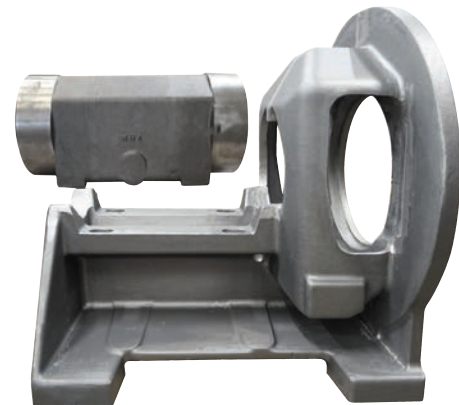
Frame-200 kg  
GJL 200



Manholes-30 kg  
GJS 500-7

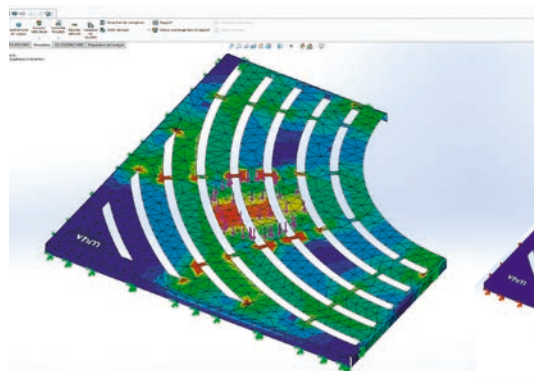
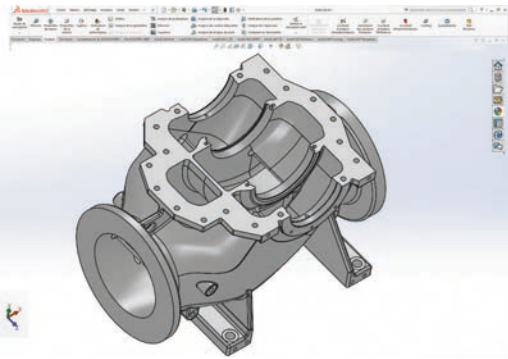


Lighting bundle-47 kg



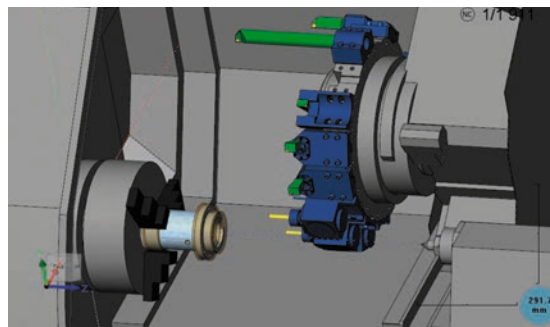
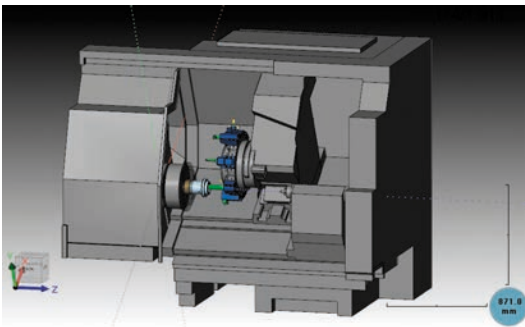
Bearing-250kg - Bearing housing- 60 kg  
GJL 250

▲ CAD & RDM (MECHANICAL CALCULUS) : SOLIDWORKS

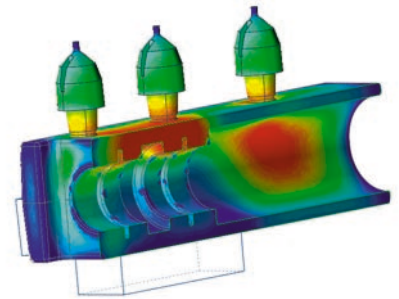
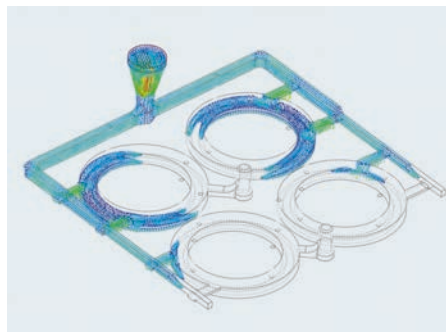
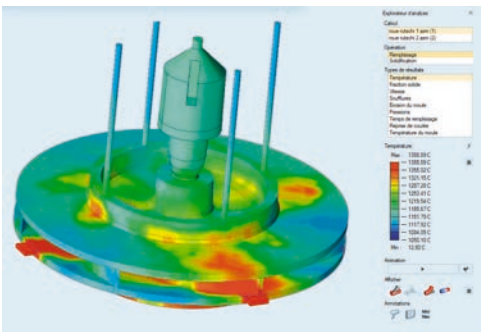


Stress and deformation simulation

▲ MACHINING CAM : SOLIDCAM



▲ POURING & SOLIDIFICATION SIMULATION : INSPIRE CAST

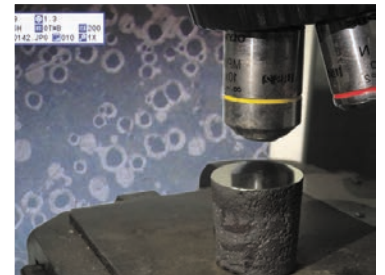
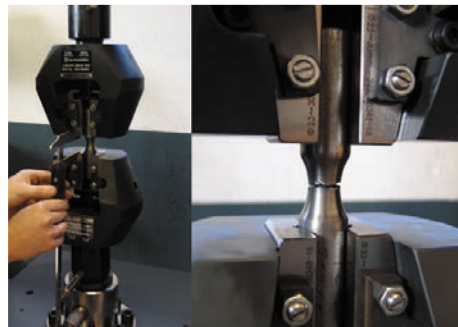


▲ INSPECTION MEANS

- Tensile strength
- Hardness
- Three-dimensional optical inspection
- Spectrometric analysis
- Micrographic analysis
- Coating resistance
- Air and water leaking test

Outsourcing :

- Ultrasonic test
- X-ray inspection
- Dye-penetrant inspection
- Magnetic particle inspection
- Notched bar impact strength



Passage de l'air



▲ CERTIFICATION





[www.vhm-fonderie.fr](http://www.vhm-fonderie.fr)

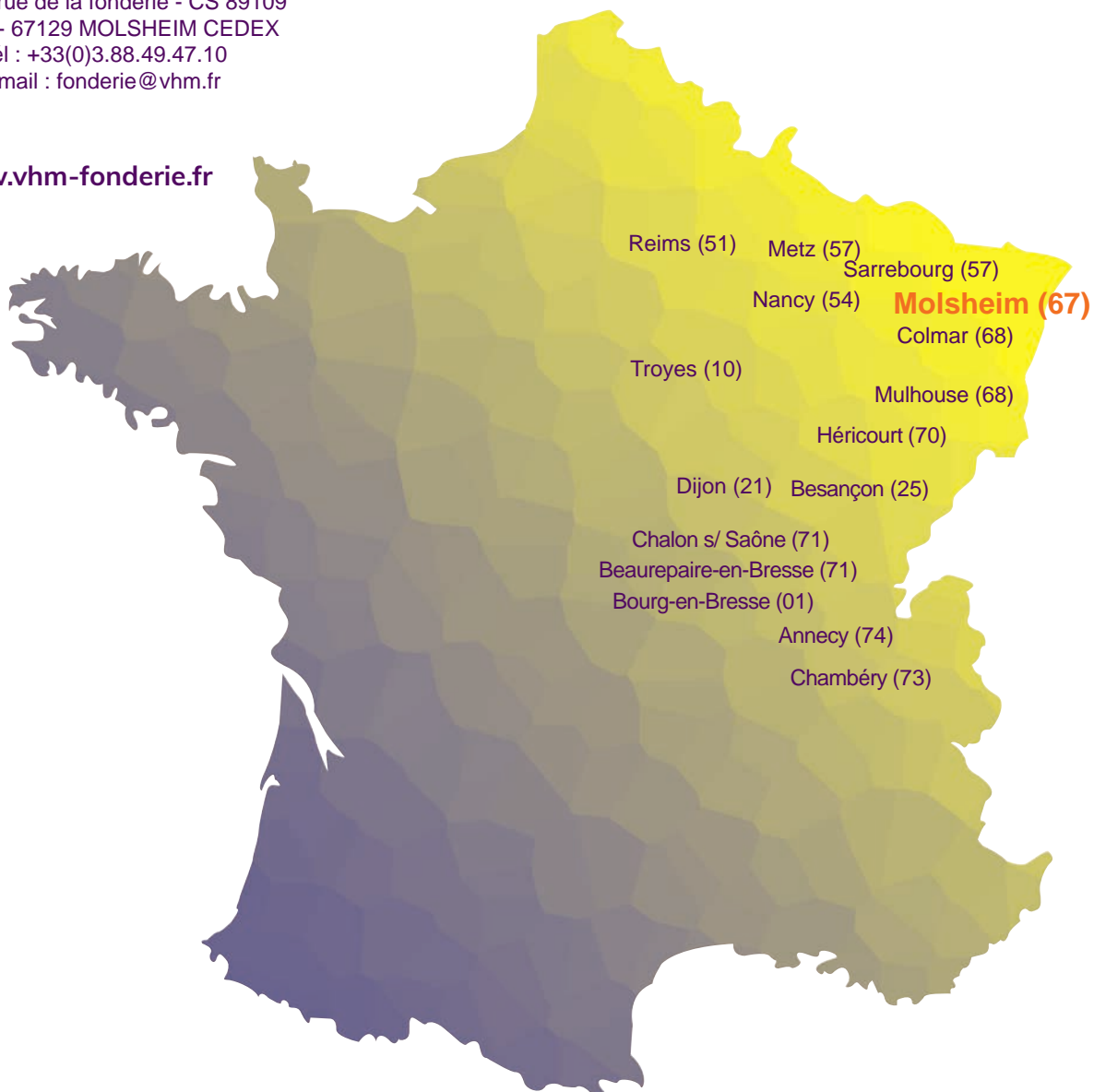


*Also includes :*

**Vhm CANALISATION**  
Tél. : +33(0)3.88.49.47.00  
e-mail : canalisation@vhm.fr  
[www.vhm-canalisation.fr](http://www.vhm-canalisation.fr)

**Vhm ÉCLAIRAGE**  
Tél. : +33(0)3.88.47.86.00  
e-mail : eclairage@vhm.fr  
[www.vhm-eclairage.fr](http://www.vhm-eclairage.fr)

**Vhm MOBILIER URBAIN**  
Tél. : +33(0)3.88.49.47.17  
e-mail : mobilierurbain@vhm.fr  
[www.vhm-mobilierurbain.fr](http://www.vhm-mobilierurbain.fr)



*Our partners :*

